

BOLOGNA

BORGOPANIGALE

ITALY

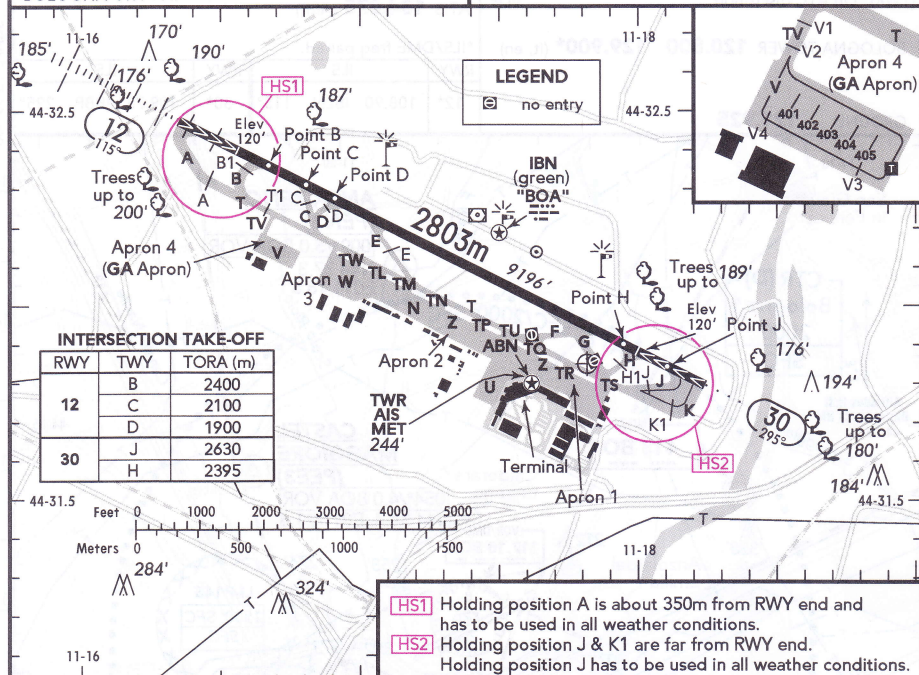
19-2 18 NOV 16

JEPPESEN

(FIS) PADOVA INFORMATION

126.425 (0700-2100LT) 124.150 (O/T)

BOLOGNA GROUND 121.925



TAXI

ABN - IBN - ALS - PAPI 12 (3°), 30 (3.5°) - THR - RL - RC - TWY - APRON - WDI - OBSTL.

RWY No	Dimension (m) - Surface	TORA (m)	LDA (m)	Strength	Lights
12	2803 x 45 Asphalt	2803	2493	PCN 71/F/A/X/T	
30		2803	2442		

See also BOLOGNA 10-1V.

Traffic Circuits: RWY 30 RH, MAX circuit height 1000' SFC.

In order to verify the effectiveness of electromagnetic waves regarding birds evacuation from manoeuvring area, pilots are requested to activate meteo radar equipment before TKOF and LDG.

GA operations on AD are subject to PPR and to be requested to a handling service before DEP of any flight to AD.

Arriving GA flights must call compulsory handling service at least 20 MIN before ETA.

Any request concerning extension of assigned AD clearance must be forwarded in due times to handling agent. In case of apron stands unavailability, operator must respect clearance previously assigned.

Apron 4 is parking and operations area for GA flights and according to local procedures classified as "apron subject to special regulation". An "apron coordination service" ensures special services for GA flights on this apron.

Apron 4 and ACFT stand taxilane 'V' are not visible from tower, EXC holding point 'V1'.

Follow-me car mandatory for taxiing and air taxiing of ACFT and HEL entering Apron 4, and for departing via taxilane 'V'.

Marshaller assistance is mandatory for all arriving/departing ACFT and for engine start-up operations.

Use of ACFT stand taxilane 'V' and use of Apron 4 are subject to special restrictions for aeroplanes and HEL with overall width not exceeding 12.75m.

CHANGES: Text.

© JEPPESEN, 1999, 2016. ALL RIGHTS RESERVED.